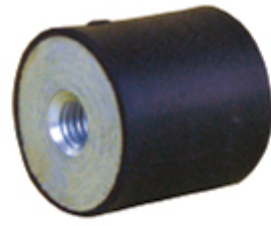
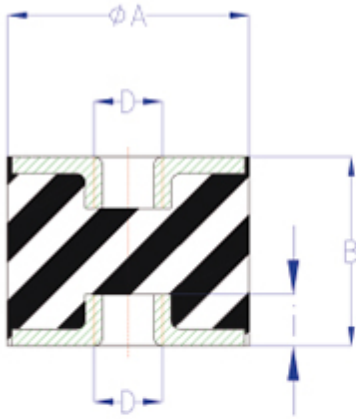
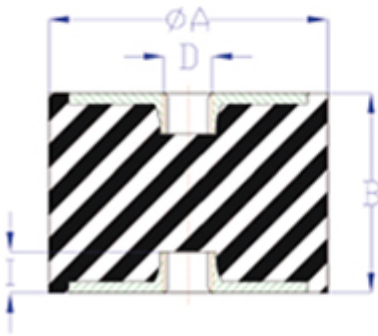


# HR\_DE

	REF / ART.NR		ABMESSUNGEN				DRUCKBELASTUNG		SCHERKRAFT	
		Sh	ØA	B	D	l	LAST	FEDERWEG	LAST	FEDERWEG
			mm.				kg.	mm.	kg.	mm.
HR	HR1615	60	16	15	M-05	5	15	2,5±0,5	2	2,0±0,5
	HR1620	60	16	20	M-05	5	15	3,5±0,5	2	4,0±0,5
	HR1625	60	16	25	M-05	5	15	4,5±1,0	2	5,0±1,0
	HR2015	60	20	15	M-06	5	40	2,0±0,5	3,5	3,0±0,5
	HR2020	60	20	20	M-06	5	30	4,0±1,0	2,5	4,0±0,5
	HR2025	60	20	25	M-06	5	30	5,0±1,0	2,5	5,0±1,0
	HR2030	60	20	30	M-06	5	25	6,0±1,0	2,5	6,0±1,0
	HR2520	50	25	20	M-08	6	50	4,0±0,5	8	4,0±0,5
	HR2525	50	25	25	M-08	6	45	5,0±1,0	6	5,0±1,0
	HR2530	50	25	30	M-08	6	40	6,0±1,0	5	6,0±1,0
	HR2540	50	25	40	M-08	6	40	8,0±1,0	5	8,0±1,0
	HR2822	50	28	22	M-08	6	60	4,5±1,0	11	5,0±1,0
	HR3020	50	30	20	M-08	6	80	4,0±0,5	11	4,0±0,5
	HR3030	50	30	30	M-08	6	60	6,0±1,0	11	6,0±1,0
	HR3330	60	30	30	M-08	6	80	6,0±1,0	16	6,0±1,0
	HR3040	50	30	40	M-08	6	60	8,0±1,0	11	8,0±1,0
	HR4020	50	40	20	M-10	7	175	4,0±0,5	20	4,0±0,5
	HR4028M8	50	40	28	M-08	6	125	5,5±1,0	16	5,5±1,0
	HR4028	50	40	28	M-10	7	125	5,5±1,0	16	5,5±1,0
	HR3430	60	40	30	M-08	6	200	6,0±1,0	40	6,0±1,0
	HR4035	50	40	35	M-10	7	100	7,0±1,0	16	7,0±1,0
	HR4040M8	50	40	40	M-08	6	100	8,0±1,0	16	8,0±1,0
	HR4040	50	40	40	M-10	7	100	8,0±1,0	16	8,0±1,0
	HR4045M8	50	40	45	M-08	6	100	9,0±1,0	16	9,0±1,0
	HR4045	50	40	45	M-10	7	100	9,0±1,0	16	9,0±1,0
	HR5020	50	50	20	M-10	7	300	4,0±0,5	25	4,0±0,5
	HR5025	50	50	25	M-10	7	175	5,0±1,0	25	5,0±1,0
	HR5030	50	50	30	M-10	7	160	6,0±1,0	25	6,0±1,0
	HR5035	50	50	35	M-10	7	160	7,0±1,0	25	7,0±1,0
	HR5040	50	50	40	M-10	7	155	8,0±1,0	25	8,0±1,0
	HR5045	50	50	45	M-10	7	150	9,0±1,0	25	9,0±1,0
	HR5060	50	50	60	M-10	7	130	12,0±1,5	25	12,0±1,5
	HR6025	50	60	25	M-10	7	400	5,0±1,0	35	5,0±1,0
	HR6035	50	60	35	M-10	7	300	7,0±1,0	35	7,0±1,0
	HR6045	50	60	45	M-10	7	250	9,0±1,0	35	9,0±1,0
	HR6060	50	60	60	M-10	7	225	12,0±1,5	35	11,0±1,5
HR7035M10	50	70	35	M-10	9	450	7,0±1,0	55	7,0±1,0	
HR7040M10	50	70	40	M-10	9	400	8,0±1,0	70	8,0±1,0	
HR7050M10	50	70	50	M-10	9	300	10,0±1,0	35	10,0±1,0	
HR7070M10	50	70	70	M-10	9	300	14,0±1,5	35	14,0±1,5	
HR7035	50	70	35	M-12	10	450	7,0±1,0	55	7,0±1,0	
HR7040	50	70	40	M-12	10	400	8,0±1,0	70	8,0±1,0	
HR7050	50	70	50	M-12	10	300	10,0±1,0	35	10,0±1,0	
HR7070	50	70	70	M-12	10	300	14,0±1,5	35	14,0±1,5	
HR8030	50	80	30	M-14	9	950	6,0±1,0	100	6,0±1,0	
HR8040	50	80	40	M-14	9	600	8,0±1,0	80	8,0±1,0	
HR8055	50	80	55	M-14	9	500	11,0±1,5	70	11,0±1,5	
HR9540	50	95	40	M-16	14	1000	8,0±1,0	140	8,0±1,0	
HR102	HR102D45	45	102	55	M-16	14	500	11,0±1,5	100	11,0±1,5
	HR102D60	60	102	55	M-16	14	1000	11,0±1,5	200	11,0±1,5
	HR102D75	75	102	55	M-16	14	2500	11,0±1,5	350	11,0±1,5
HR	HR15075	50	150	75	M-20	20	1800	15,0±2,0	275	15,0±2,0



HR



HR102

